

Encouraging and Demonstrating Local Environmental Action

Township of Rideau Lakes
Mon. Nov. 25, 2024



**RIDEAU
ENVIRONMENTAL
ACTION LEAGUE**

1

What REAL is About



2

2

REAL Beginnings 1989

Think Globally Act Locally



3

Activities chosen are:

- Hands-on
- Small scale, achievable
- Low cost
- Show value of small actions
- Empowering
- Non-confrontational
- Needed in our community

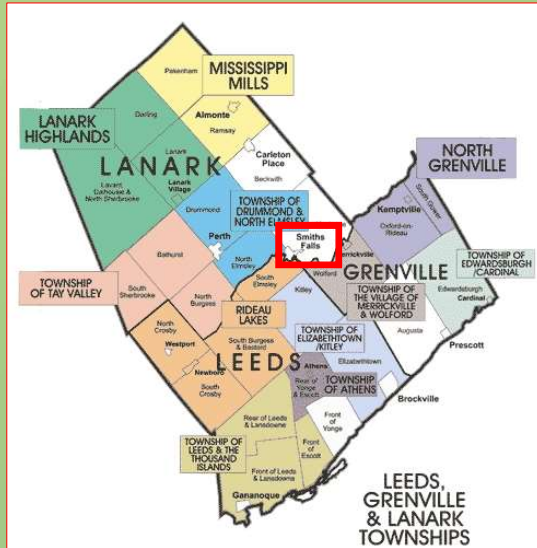
Making a REAL Difference



4

Non-profit, volunteer run community organization serving Lanark, Leeds and Grenville.

REAL people taking REAL action to protect our environment



5

On the Ground Mini Forest

Hyland Park, Smiths Falls



6

Depave, SF Town Square

- Removed chunk of Daniel St. by hand
- Planted two gardens
- REAL maintains
- Funded by OTF through GCC



7

Tree Planting at Local Schools

- Five trees at six schools, including Lombardy
- School Councils, volunteers, students involved
- Funded primarily from Tom Foulkes donations



8

Evergreen Avenue

Victoria Park, Smiths Falls



9

Monarch Garden

REAL Deal Site



10

Community Garden

REAL Deal Site



11



Compost Demo Site
next to Community Garden

12

Other Opportunities to Participate

Shoreline Cleanups



13

Pitch In Smiths Falls



14



Available to Borrow:

Radon Meter Air Quality Meter Killawatt Meters FoodCycler

15

Home Energy Audits

- 20 years or more
- Al Leonard, Lombardy resident, REA
- Learn which renovations give you the most value for the money
- necessary for accessing various incentive programs
- 2023: 14 pre and 9 post audits
- Help people reduce their GHG



16





- Corner of REAL Deal
- Over 100 tools
- Week at a time
- \$25 / 6 mo or \$45/ year

17

Displays at Public Events





18

Rain Barrels



19

Rideau Roundtable Collaboration



Wetlands Awareness Tours



Shoreline Demonstration Planting
EcoLiteracy Program coming to
libraries, incl Rideau Lakes

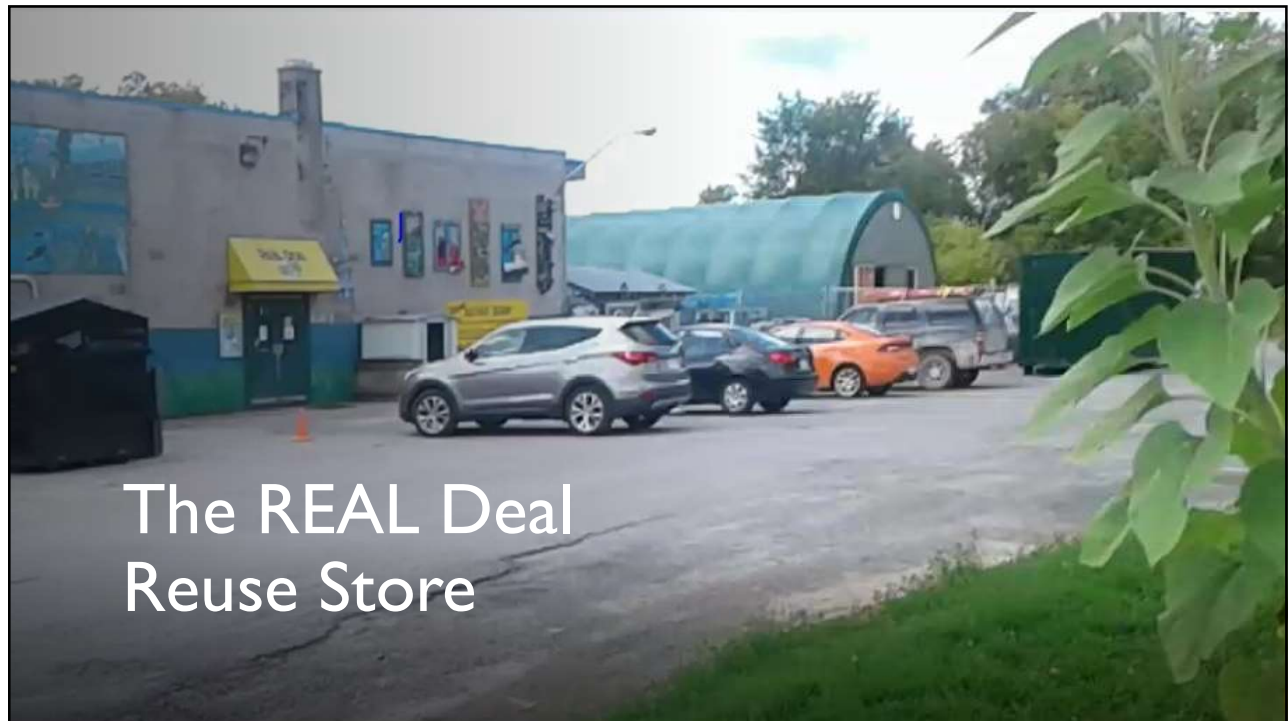
20

SF Climate Protection
Working Group Rep

Peter Au



21



The REAL Deal
Reuse Store

22

Our Goals

1. Reduce waste going to landfills.
2. Raise funds to support REAL's projects.
3. Create work and volunteer opportunities.



23



24

Yard and Dome

Sets us apart from many other thrift stores



25



Think Second Hand First

- Weighing and tracking by municipality
- No sales tax charged
- REAL is a registered Canadian charity

Divert 57 tonnes in total,
9.7 tonnes are Rideau Lakes
about 17% (similar for
donating and buying)

9,800 buyers



26

Low cost items a benefit to limited income residents.



27

Free Table
Some merchandise is provided free of charge.



28

Hard to Recycle



29



30

Electronic Waste Depot

- Service to residents
- Source of income
- Paid by weight
- Can now accept electric appliances

Take in 30 tonnes ewaste

Take in 11.5 tonnes scrap



31

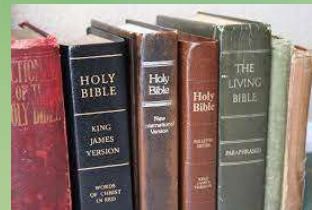
People

- 4.5 x 30 hr week jobs
- Placements through agencies: OnTrac, Algonquin, HRSDC etc.
- Volunteer opportunities
- Over 2000 hrs per year on store alone



32

Helping Other Community Groups



33

More Than Just a Reuse Store

- Encourage thinking second hand first, make it more mainstream
- Attracts people from outside LLG, now up to 12%
- Hub of environmental activity – either by demonstration or opportunity
- Audience for other programs



34

Two Fundraisers

Spring Garden:

- Rain barrels
- Native and perennial plants
- Seeds
- Composters
- TUC Mushroom Compost
- Benefit monarch gardens



35

Fall Online Auction

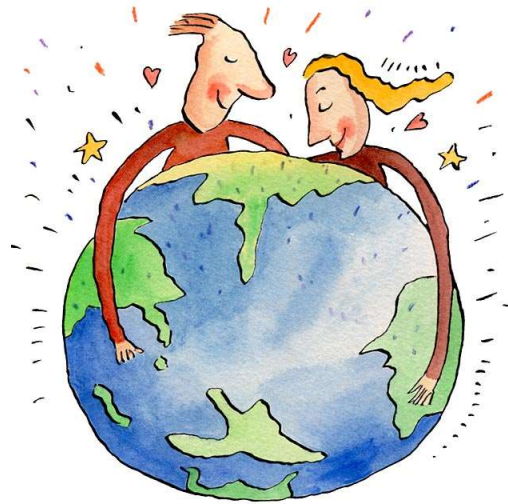
- Mostly used things contributed to REAL Deal
- And other good stuff
- Auction proceeds split between REAL and REAL Deal
- This year Nov 13 – 23, 2024



36

In Summary

- Strong environmental voice in region
- Demonstrate good environmental stewardship
- Opportunities for residents to participate in environmental activities.
- Work and Placement Opportunities
- Reduce waste
- Programs open to anyone
- Good 35 year track record



37

37

Any questions?



www.REALaction.ca

38

38